

# MONTHLY MEMBERSHIP PROGRESS REPORT

LOCATION REP OF BANGLADESH

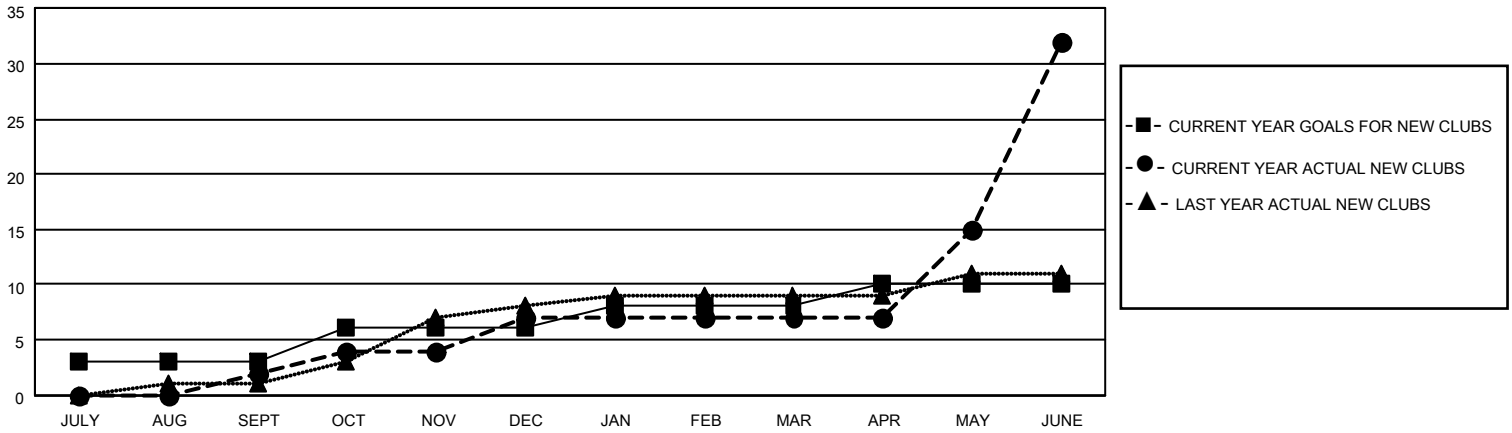
District 315B3

Results as of: 6/30/2023

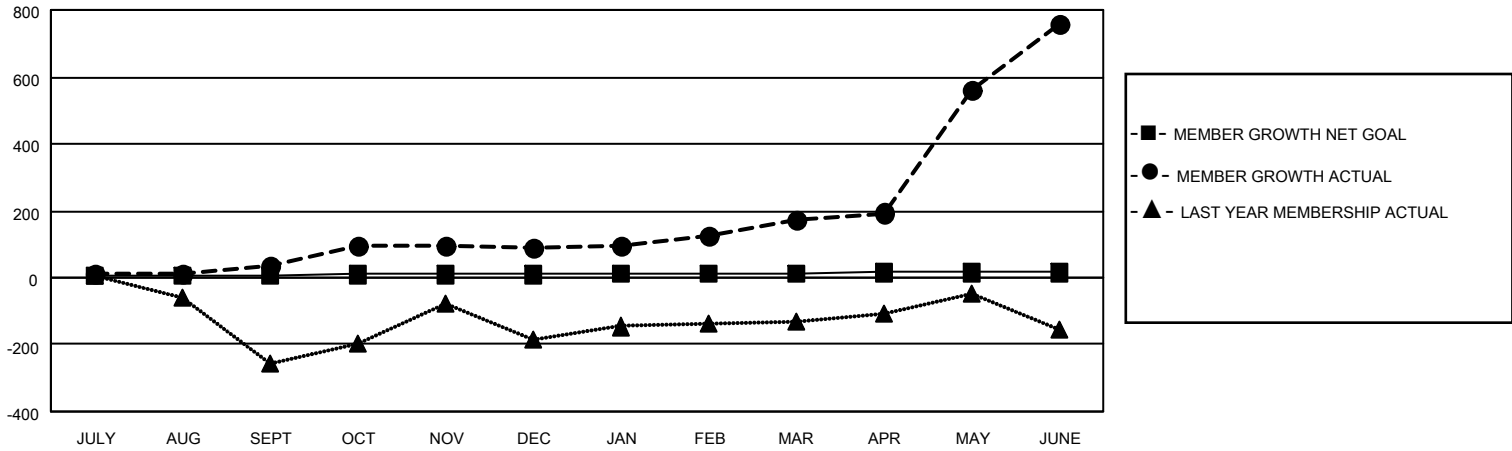
Clubs			
RESULTS FOR 2022-2023			
QUARTER	NEW CLUB GOAL	NEW CLUBS	DROPPED CLUBS
JULY/AUG/SEPT	3	2	0
OCT/NOV/DEC	3	5	1
JAN/FEB/MAR	2	0	0
APR/MAY/JUNE	2	25	0

Members			
RESULTS FOR 2022-2023			
QUARTER	MEMBER GROWTH NET GOAL	MEMBER GROWTH ACTUAL	DROPPED MEMBERS ACTUAL (including transfers)
JULY/AUG/SEPT	4	89	40
OCT/NOV/DEC	5	135	83
JAN/FEB/MAR	3	156	27
APR/MAY/JUNE	3	821	220

**GOALS AND ACTUAL NEW CLUBS CUMULATIVE**



**GOALS AND ACTUAL MEMBERS CUMULATIVE**



**DROPPED CLUBS: 1**

**92 CLUBS OF 117 ADDED 1 OR MORE NEW MEMBERS**

**GENDER DISTRIBUTION**

MALE	2,078 (75.07%)
FEMALE	686 (24.78%)
NON BINARY	0 (0.00%)
PREFER NOT TO ANSWER	4 (0.14%)

**DROPPED MEMBERS**

[CLICK HERE FOR CUMULATIVE MEMBERSHIP DATA](#)

DECEASED	5
CLUB CANCELLED	41
OTHER	324
<b>TOTAL</b>	<b>370</b>

TOTAL FAMILY UNIT MEMBERS 1,053

FAMILY MEMBERS PAYING HALF DUES 599